

claremorris gallery  
θαμειλ



**EMMA STROUDE | slow heat**

**September 27<sup>th</sup> - October 18<sup>th</sup>**

**Gallery Hours: Wed to Sat, 1 - 6pm**

A photograph of Emma Stroude, a painter and draughtswoman, sitting on a wooden stool in her studio. She is wearing a black jacket over a blue turtleneck and has paint splatters on her dark trousers. She is holding a paintbrush in her right hand. Behind her is a large, partially completed painting of a man in a white shirt and dark trousers, with his arms raised. The background wall is white with some green and blue paint splatters. The text 'claremorris gallery' is visible in the top right corner of the image.

claremorris gallery

gallery

### About the Artist

Emma Stroude is a Berlin-born, UK-raised, and Sligo-based painter and draughtswoman. She studied at Chelsea College of Art and Design and the Slade School of Art in London before moving to Ireland in 1996. Her work often draws inspiration from Ireland's dramatic light and landscapes while engaging with themes of women's roles in history and society.

Her paintings and drawings are held in numerous collections, including the Office of Public Works, Sligo and Kildare County Councils, Pierce Brosnan, and Luciano Benetton's Imago Mundi. In 2021, her portrait *Fifteen* won the Ireland-U.S. Council Award for Portraiture at the Royal Hibernian Academy's Annual Exhibition. Recent projects include *In Plain Sight*, a commission honouring pioneering women in Irish law.

## EMMA STROUDE | slow heat

Slow Heat emerges from a collaboration between Stroude and three actors, who explored themes of women's potentiality, endurance, and the necessity of moving beyond inherited preconceptions. Their embodied performances became the catalyst for Stroude's striking new works, which weave together performance, archetypes, and art historical references.

Virginia Woolf's writings were a persistent influence during the making of Slow Heat. Woolf's metaphors of fire and heat—as forces of transformation and resistance—resonate deeply within Stroude's paintings, which reflect a simmering intensity rather than sudden revolution. The works explore archetypes embedded in our cultural DNA, reinterpreting figures from Inky Wincy Spider to Mary Magdalene, while engaging in dialogue with feminist artists such as Paula Rego, Rebecca Horn, and Ana Mendieta.

In these works, Stroude paints the performed experiences of women through a female lens. The figures undergo transformation, endure hardship, and support one another, embodying resilience, tenderness, and determination. Slow Heat is an invitation to witness women's collective potential and the enduring flame of change.

Gallery Hours - 1 to 6pm, Wednesday to Saturday  
or by appointment, (087) 7912337

[www.claremorrisgallery.com](http://www.claremorrisgallery.com)



Enough (After Rego), Oil on canvas, 120cm x 140cm, 2025, €5600



Emma Stroude  
Whats the Time Ms Woolf  
Oil on canvas  
50cm x 70cm  
2025  
€1800



Three Towers. Impenitent., Oil on canvas, 150cm x 150cm, 2025, €7200



Emma Stroude, *Seeds*, Oil on canvas, 100cm x 150cm 2025, €5600



Emma Stroude, *Incy Wincy*, Oil on canvas, 80cm x 80cm, 2025, €2200



Ruth,  
Oil on canvas,  
25cm x 20cm, 2025  
€1100



Lia,  
Oil on canvas,  
25cm x 20cm,  
2025  
€1100



Emilia,  
Oil on canvas,  
25cm x 20cm,  
2025  
€1100



Emma Stroude  
Petra  
Oil on canvas  
120cm x 100cm  
2025  
€4,400



Emma Stroude  
Ruby  
Oil on canvas  
100cm x 100cm,  
2025  
€2800



Ridding the Pink  
Oil on canvas,  
120cm x 100cm, 2025  
€4400



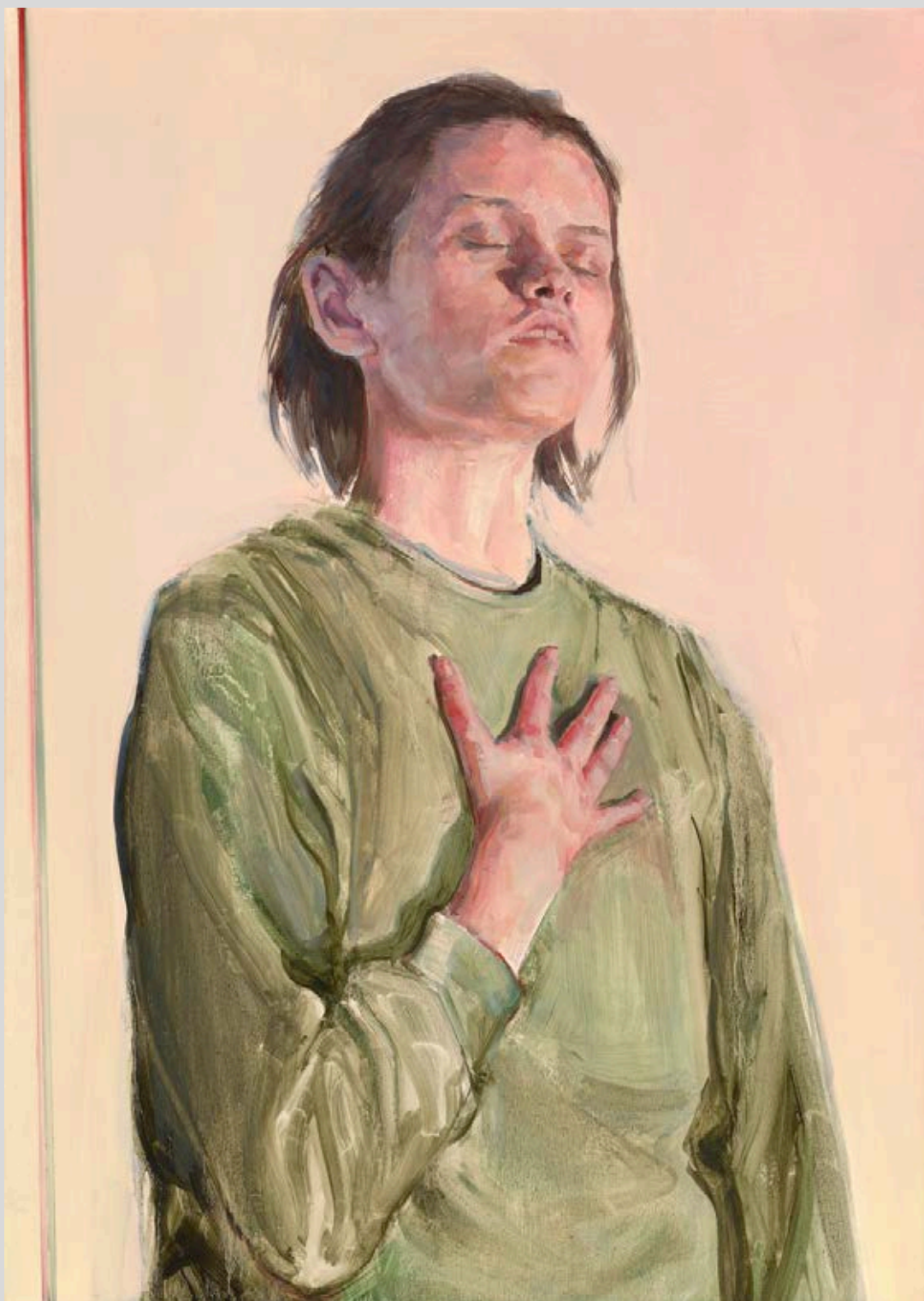
Stronghold,  
Oil on canvas,  
120cm x 100cm,  
2025  
€4400



Emma Stroude,  
Gradual Heat,  
Oil on canvas,  
150cm x 100cm,  
2025,  
€5600



Empty Handed and Armed  
Oil on canvas,  
160cm x 100cm, 2025  
€5700



Pandora. Impenitent. Oil on canvas, 70cm x 50cm, 2025, €1800

Gallery Hours - 1 to 6pm, Wednesday to Saturday  
or by appointment, (087) 7912337

[www.claremorrisgallery.com](http://www.claremorrisgallery.com)

claremorris gallery  
galleri